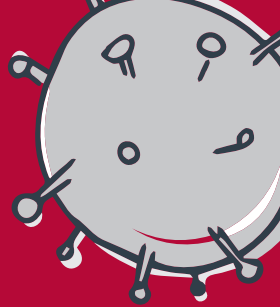


# COVID-19 DECISION GUIDE:

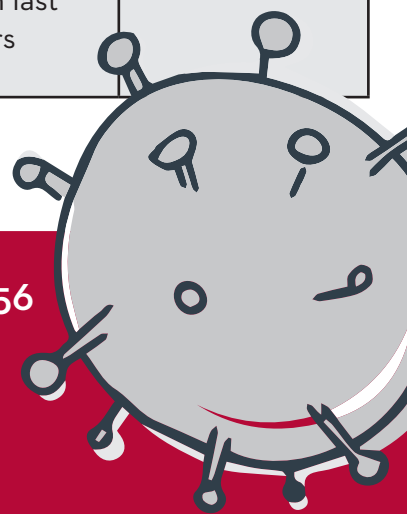
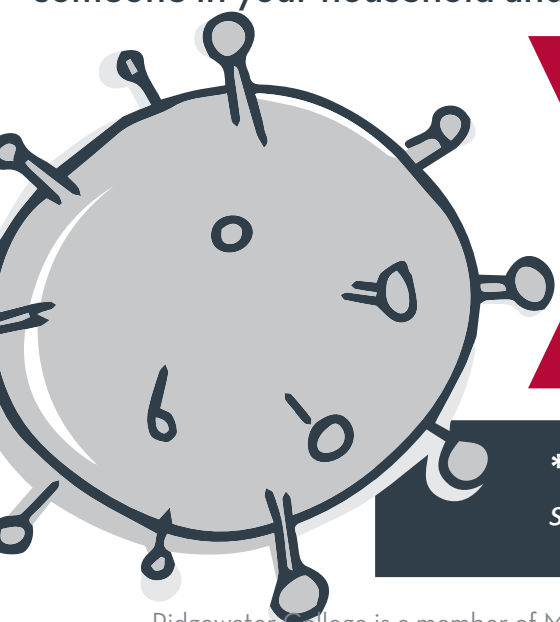
What to do if you are exposed, sick or test positive

2021-2022



	YOU ARE VACCINATED...				YOU ARE NOT VACCINATED...			
What is your situation?	And you have symptoms	And you do NOT have symptoms	And you test positive	And you are exposed to someone who tests positive	And you have symptoms	And you don't have symptoms	And you test positive	And you are exposed to someone who tests positive
Should you wear a mask around others?	Yes	Yes, masks are required inside all college buildings	Yes	Yes	Yes	Yes, masks are required inside all college buildings	Yes	Yes
Should you come to work/class?	No	Yes	No	Yes, unless you have symptoms	No	Yes, unless you have been exposed	No	No
Should you get tested?	Yes	No	N/A	Yes	Yes	No	N/A	Yes
When should you get tested?	Immediately	N/A	N/A	5-7 days after date of exposure	Immediately	N/A	N/A	5-7 days after date of exposure
Should you complete a Ridgewater COVID Exposure Reporting Form?	Yes	No	Yes	Yes	Yes	No	Yes	Yes
When can you return to work/class?	After you have quarantined 10 days* AND no longer have symptoms – OR you test negative	You can work or attend class	After you quarantine 10 days* AND no longer experience symptoms	Immediately. No quarantine required	After you have quarantined 10 days* AND symptoms are improving, no fever without meds in last 24 hours – OR you test negative	You can work or attend class	After you quarantine 10 days* AND symptoms are improving, no fever without meds in last 24 hours	After you have quarantined 10 days*

\* A total quarantine time of 20 days (10 + 10) MAY be required if the exposure/positive test involves someone in your household and you cannot completely isolate from them as required.



Questions? Email [safety@ridgewater.edu](mailto:safety@ridgewater.edu) or text 320-212-1556

Additional COVID-19 information available at:

- [www.health.state.mn.us/diseases/coronavirus/index.html](http://www.health.state.mn.us/diseases/coronavirus/index.html)
- [www.ridgewater.edu/covid-19](http://www.ridgewater.edu/covid-19)

**\*Instructors:** If you are notified by a student text us at 320-212-1556 or email [safety@ridgewater.edu](mailto:safety@ridgewater.edu) as soon as possible to assist in the reporting process.